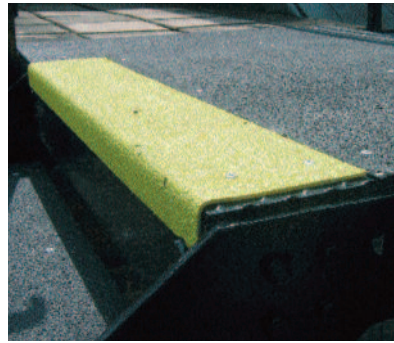
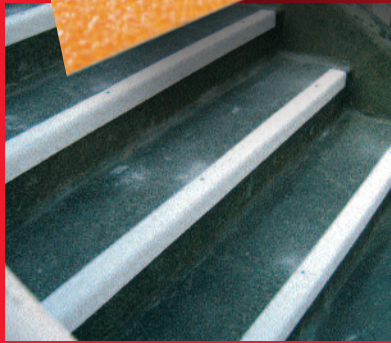
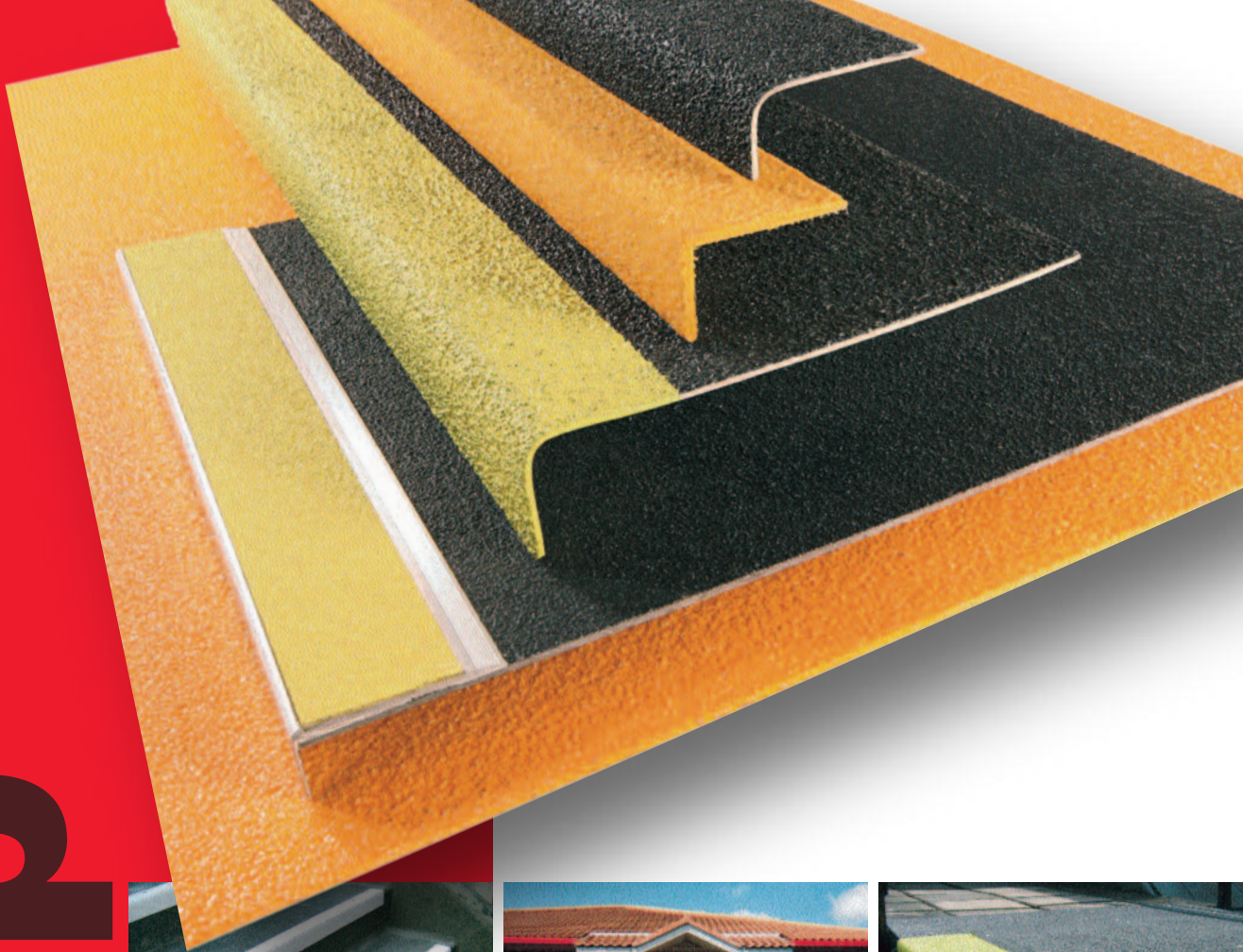


# suregrip



Making Slippery Surfaces Safer

**A quick simple  
and cost effective  
anti-slip solution**

**ecotile**  
SOLVING YOUR  
FLOORING PROBLEMS

# Key Benefits

## Introduction

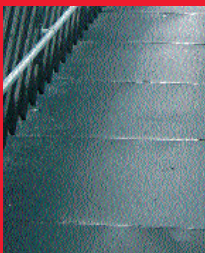
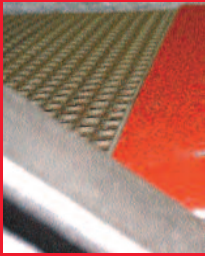
Ecotile Flooring Ltd is the UK's premier industrial flooring solutions company. Our success at home and abroad is due to an absolute commitment to quality, customer service and product innovation. In line with our customers' changing needs we have invested heavily to develop a tough, low maintenance, environmentally friendly and extremely durable range of anti-slip stair treads, nosing, flat sheet, decking and grating suitable for almost any environment.

We have established an unrivalled reputation for product quality, industry expertise, uncompromising client service and an ability to meet demanding lead times. Ecotile work closely with many of the UK's leading manufacturing companies, building and facilities managers, local authorities and educational establishments delivering innovative, cost effective and practical solutions that can be implemented quickly and with minimal disruption.

## Manufacture, Installation & Responsible Environmental Practise

SureGrip is manufactured from corrosion-resistant GRP (glass reinforced plastic), with a durable isophthalic resin coating encapsulating high-grade silicon carbide anti-slip grit. Different sizes of anti-slip aggregate are available to suit domestic, commercial or industrial applications. SureGrip is quick and simple to install using an external grade gap filling adhesive and mechanical fixings suitable for the substrate SureGrip is being applied to. We recommend using stainless steel fixings whenever possible to avoid the risk of corrosion causing the fixture to fail. Use wood screws for timber substrates, screw and rawplug for concrete and stone, self-drill / self-tapping screws or nut and bolt fixings for metal substrates.

- 
- *Exceptional durability*
  - *Quick and simple to install*
  - *Excellent corrosion resistance*
  - *Environmentally friendly*
  - *Very low through life cost*



## The SureGrip Advantage

### Simple Installation

Quick and easy to install with minimal disruption to site activities. Just fit straight over the existing surface.

### Excellent Anti-slip Performance

Precision engineered using the highest grade of isophthalic resins and silicon carbide grit.

### Chemically Resistant

Resists most corrosives and chemical fluids.

### Boosts Safety

Provides extra traction in areas of severe slip hazard.

### Exceptional Durability

Virtually indestructible 4mm thick glass reinforced plastic and 100% corrosion resistant.

### Instant Results

Can be fixed over any solid surface.

### Proven Technology

Tried and tested by insurance companies and shown to significantly reduce the risk of accidents.

### Fire Retardant

Meets Class A2-s1 in accordance with EN ISO 9239-1.

### Better Performance

Longer lasting and easier to maintain than paint, resin or anti-slip tapes.

### Lower Life Cycle Cost

Unlike common alternatives, SureGrip does not require regular repair work/replacement.

### Versatile

Wide range of contrasting colours and sizes.

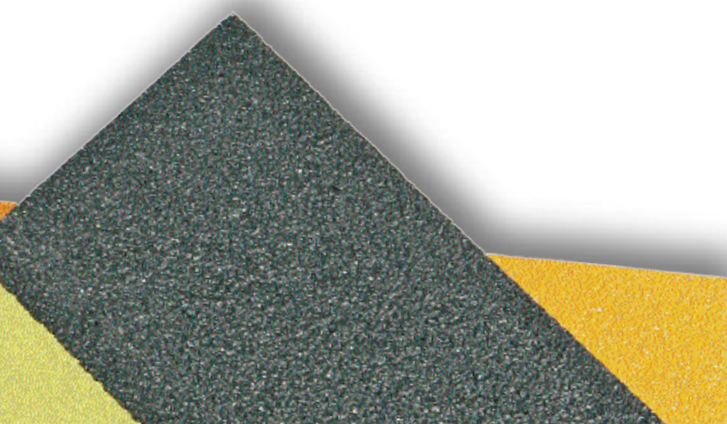
### Disability Discrimination Act

Helps you comply with the Disability Discrimination Act (DDA) and the Equality Act 2010.



## Typical Applications

- Stair Treads
- Stair Nosings
- Flat Sheet
- Decking
- Landing Covers
- Ramps
- Scissor Lifts
- Platforms
- Bridges
- Work Platforms
- Roof Walkways
- Pontoons



# The SureGrip Anti-slip Product Range

## SureGrip Anti-slip Stair Edge Covers / Nosing

SureGrip Step Edge Covers are suitable for stairs that experience lower levels of foot traffic and fit over the front of the step, with a chamfered back edge to eliminate any trip hazard and up to a 55mm down-stand over the front of the riser. They comply with DDA legislation and are a cost-effective way to provide a high visibility anti-slip surface. Stair edge covers can be fitted directly over any solid surface using a combination of glue and mechanical fixings.

ALL COVERS/NOSING CUT TO CUSTOMER DIMENSIONS FREE OF CHARGE

### Dimensions

Width	Max Depth (Going)	Front (Riser)
800mm	55mm	55mm
1000mm	55mm	55mm
1200mm	55mm	55mm
1500mm	55mm	55mm
2000mm	55mm	55mm
3000mm	55mm	55mm



### Standard Colours

Yellow, White or Red (Other colours available)

## SureGrip Anti-slip Stair Tread Covers

SureGrip Stair Tread Covers are designed to cover the entirety of the step and are most suitable steps that are in constant use/heavy use. The treads are 4mm thick, up to 345mm deep and range from 800 to 3000mm wide. The anti-slip stair tread cover can be fitted directly over any solid surface quickly and easily using a combination of glue and mechanical fixings. Once the tread cover has been installed the steps are immediately ready for use making them an ideal solution for repairing dangerous, worn or damaged steps.

ALL TREADS CUT TO CUSTOMER DIMENSIONS FREE OF CHARGE

### Dimensions

Width	Max Depth (Going)	Front (Riser)
800mm	345mm	55mm
1000mm	345mm	55mm
1200mm	345mm	55mm
2000mm	345mm	55mm
3000mm	345mm	55mm



### Standard Colours

Black, Yellow, Black with yellow nosing, Black with White nosing or Stone

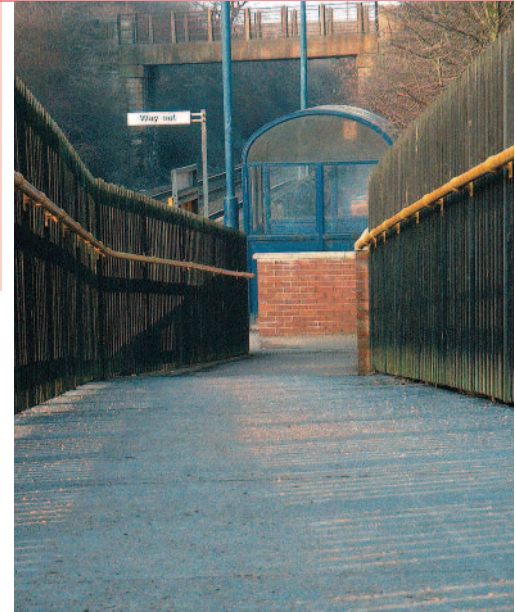
## SureGrip Flat Sheet

SureGrip Flat Sheet is manufactured in either 1220mm x 1220mm or 2440mm x 1220mm panels with a hardwearing anti-slip finish. Standard colours are black and yellow. The flat sheet can be fitted directly over any solid surface quickly using a combination of glue and mechanical fixings, to provide an immediate, long-lasting, anti-slip surface on ramps, platforms, walkways, loading bays or anywhere a slip hazard exists.

ALL COVERS / NOSINGS CUT TO CUSTOMER DIMENSIONS FREE OF CHARGE

### Standard Sizes

Length	Width
1220mm	1220mm
2440mm	1220mm



Standard Colours  
Black or Yellow



# The SureGrip Anti-slip Product Range

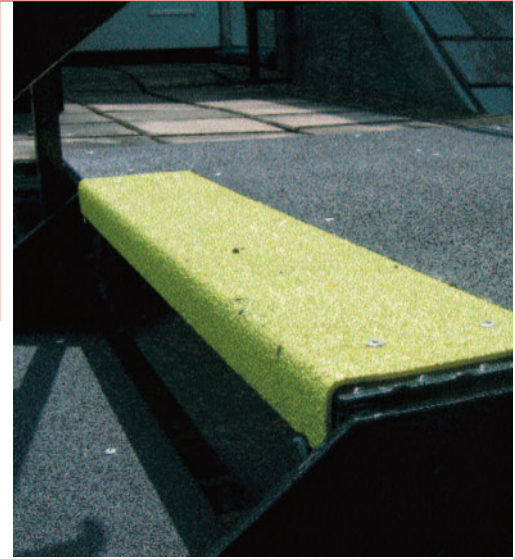
## SureGrip Landing Covers

SureGrip Landing Covers combine a flat sheet and stair tread to provide a seamless anti-slip covering for either the top step or landings. Standard colours are black, light grey and yellow, and a contrasting leading edge can be applied to comply with DDA legislation. The landing covers are the same thickness as the flat sheet so can be butted up together if a longer run or length is required. Installation is quick and easy using a combination of glue and mechanical fixings to create a long-lasting, anti-slip surface.

ALL COVERS/NOSING CUT TO CUSTOMER DIMENSIONS  
FREE OF CHARGE

### Standard Sizes

Length	Width	Front (Riser)
2400mm	1200mm	55mm
1200mm	1200mm	55mm



### Standard Colours

Black or yellow with contrasting nosing

# SureGrip Installation

SureGrip is generally glued and screw fixed. SureGrip external grade adhesive mastic is ideal since it will make up minor deviations in the substrate and prevent the GRP drumming or rocking. SureGrip external grade adhesive mastic should be applied to sound, clean dry surfaces if it is to be the only method of fixing in lightly trafficked areas. If application is to damp, dirty or friable surfaces or in very cold weather, use SureGrip external

grade adhesive mastic to bed the GRP item into place and then always screw fix. Screw fixings are generally at about 600mm intervals. Drilling through the placed GRP is easy using a standard twist drill suitable for wood or metal. Countersinking is not required (see below). Screw fixing should also be used if the GRP is likely to be trafficked before the SureGrip external grade adhesive mastic has set.

## Trimming

A good quality jigsaw or hacksaw can be used for trimming. The GRP material is quite tough to cut so if too much trimming is envisaged, please ask about our cut to size service.

## Fixings

The following may be used as a guide.

To timber: No.8 x 30mm zinc plated or stainless steel screws.

To steel plate: No.8 x 20mm self-tapping pan head Pozi stainless steel screws or No.8 x 20mm self drilling pan head Philips zinc plated screws.

To concrete: No.8 x 30mm zinc plated or stainless steel impact anchors (Hilti HPS-1 or similar).

To open mesh: Stainless steel or zinc plated saddle clips and domed head bolts suitable in length for the depth of the existing treads.

## Countersinking

When drilling holes in the GRP we do not recommend countersinking. When the screw is screwed down firmly, the screw head becomes embedded in the surface texture. The top of the screw head should be flush with the surrounding surface and therefore not present a trip hazard.

## Preparation

Very little preparation of the substrate is required. It should be reasonably clean and dry if the external grade adhesive mastic is to be the only means of fixing. Badly dished or holed concrete etc should ideally be filled. SureGrip external grade adhesive mastic will take up minor undulations and imperfections.

## Fitting

Lay the items in place to ensure that they fit. Trim using a jigsaw with medium cutting blades (Bosch T101 AIF or similar are ideal).

## Drilling

Hold the GRP in place and drill through the panel and into the substrate. A rawl plug will probably be required in a concrete base. The drill hole in the GRP does not need to be larger than that drilled into the substrate.

## SureGrip GRP Treads / Step Covers

Run a 6mm bead of adhesive around the perimeter of the stair cover about 25mm in from the edges and cross hatch at about 200mm apart. Fixing is generally recommended at approx 70mm from the front, 60mm from the back, 50mm from each side.

We recommend a maximum of 500mm between fixings.

## SureGrip Stair Edge Covers / Nosings

Fixing is generally recommended approx. 50mm in from both ends and then at a maximum of 250mm centres.

## SureGrip Landing Covers & Flat Sheet

Fixings should again be approximately 15mm in from the edges. Additional fixings should be at 600mm intervals.

## SureGrip External Grade Adhesive Mastic

After drilling holes in the GRP, turn the panel over and apply the SureGrip Adhesive mastic. (The 310ml tube fits into a standard skeleton gun, also available from SureGrip). Apply a 6mm bead around the periphery of the GRP panel and in horizontal stripes at approximately 200mm intervals. Immediately press the GRP panel firmly into place. The SureGrip Adhesive Mastic will generally have achieved a

good bond within 2-4 hours in normal drying conditions.

If the SureGrip Adhesive Mastic is to be the only method of fixing, please ensure that a good bond has been achieved before re-opening the area for use. As a guide one 310ml tube of SureGrip Adhesive Mastic is sufficient for any one of the following:

- 5 x 600mm wide Step Covers
- 3 x 1000mm wide Step Cover
- 2 x 1500mm wide Step Covers
- 2 x Landing Covers
- 2 x 1200mm x 1200mm Sheets
- 1 x 1200mm x 2400mm Sheet
- 12 x 1000mm lengths of Safety Edge
- 8 x 1500mm lengths of Safety Edge

## Safety

Gloves are recommended when handling GRP. A dust mask and goggles should be used when cutting the product. Wear gloves when using SureGrip Adhesive Mastic and SureGrip Polyurethane Adhesive. Materials Safety Data Sheets are available for the adhesives. All products are available direct from The Versatile Flooring Co. Ltd in the UK and through agents worldwide. All SureGrip products are sold subject to the Company's Standard Conditions of Sale. The Company and its representatives are often asked to comment on potential uses of SureGrip products which differ from those described in the Company's data sheets. Whilst in such cases the Company and its representatives will always try to offer helpful and constructive advice, the Company cannot be held responsible for the results of such uses unless they are specifically confirmed in writing by The Versatile Flooring Company.

# Product & Technical Data

<b>CHEMICAL RESISTANCE</b>	<b>FIRE PERFORMANCE</b>
Excellent	Tested to BS476 Part 7 Class 2
<b>OPERATING TEMPERATURES</b>	<b>EFFECTS OF SUNLIGHT</b>
-40°C to +110°C	The product is UV stabilised
<b>NOMINAL PANEL WEIGHT (KG/M2)</b>	<b>NOMINAL THICKNESS (MM)</b>
4.50kg	4mm
<b>% GLASS FIBRE CONTENT</b>	<b>RESIN TYPE</b>
35%	Un-saturated isophthalic polyester
<b>HEAT DEFLECTION TEMP</b>	<b>FLEXURAL STRENGTH</b>
90°C	100MPa
<b>TENSILE STRENGTH</b>	<b>ELONGATION</b>
65Mpa	1.3%
<b>BARCOL HARDNESS</b>	
45-50	



## Ecotile Flooring Ltd

Head Office, Factory & Showroom  
Unit 15 North Luton Industrial Estate,  
Sedgwick Road,  
Luton, LU4 9DT

T: 01582 788 232

info@ecotileflooring.com  
www.ecotileflooring.com